

DRAWING NO.
SD074136

7 6 5 4 3 2 1

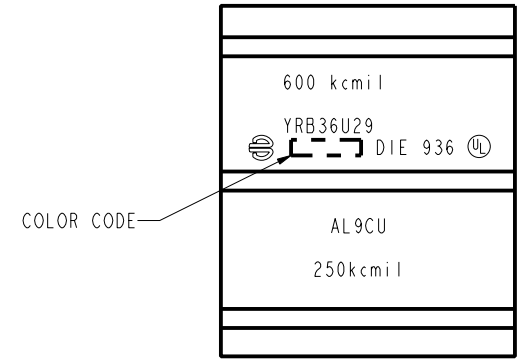
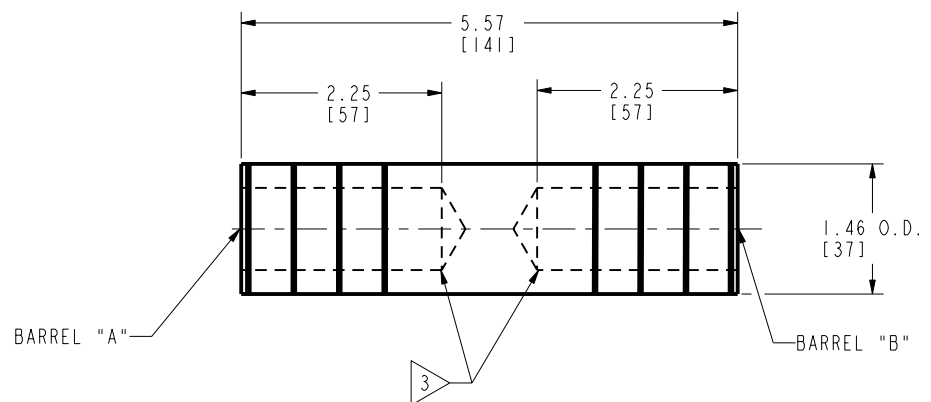
REV	DATE	DESCRIPTION	ECO	BY	C'H'K.
E	04/24/2015 16:09:00 PM	UPDATED TOOLING TABLE AND REMOVE REFERENCE TO 900 KCMIL COMPACT ALUMINUM	40005	BSB	RG

BURNDY® INSTALLATION TOOLING (# OF CRIMPS OR INDENTS PER END)						
COLOR CODE	DIE INFORMATION		HYDRAULIC			
	DIE INDEX	TYPE	Y39 Y750 PAT750	Y46 PAT46	Y45	Y60BHU
--	27AB	--	--	--	--	--
		NEST		P44D(2)		
		INDENTOR		P48PR-1		
YELLOW	936	YELLOW DIE SET	U39ART-2 (4)	U39ART-2 (4)	U39ART-2 (4)	L39ART-2 (2)
		NEST	--	--	--	--
		INDENTOR	--	--	--	--

CATALOG NUMBER	CONDUCTOR RANGE		WIRE STRIP LENGTH	DIE INDEX
	BARREL 'A'	BARREL 'B'		
YRB36U25		1/0 STR	2-5/16"	27AB 936
YRB36U28		4/0 STR		
YRB36U29		250 kcmil		
YRB36U30	600 kcmil	300 kcmil		
YRB36U31		350 kcmil		
YRB36U32		400 kcmil		
YRB36U33		450 kcmil		
YRB36U34		500 kcmil		

CATALOG NUMBER	CONDUCTOR RANGE		WIRE STRIP LENGTH	DIE INDEX
	BARREL 'A'	BARREL 'B'		
YRB39U28		4/0 STR	2-5/16"	27AB 936
YRB39U29		250 kcmil		
YRB39U30		300 kcmil		
YRB39U31	700 kcmil 750 kcmil	350 kcmil		
YRB39U32		400 kcmil		
YRB39U33		450 kcmil		
YRB39U34		500 kcmil		
YRB39U36		600 kcmil		

CATALOG NUMBER	CONDUCTOR RANGE		WIRE STRIP LENGTH	DIE INDEX
	BARREL 'A'	BARREL 'B'		
YRB44U28		4/0 STR	2-5/16"	27AB 936
YRB44U29		250 kcmil		
YRB44U30		300 kcmil		
YRB44U31		350 kcmil		
YRB44U32	1000 kcmil	400 kcmil		
YRB44U34		500 kcmil		
YRB44U36		600 kcmil		
YRB44U39		700-750 kcmil		



TYPICAL LETTERING VIEW

NOTES:

- MATERIAL: ALUMINUM
- FINISH: TIN PLATED
- BARRELS ARE PARTIALLY FILLED WITH PENETROX™ AND SEALED.
- SCRATCH BRUSHING OF ALL CONDUCTORS BEFORE MAKING INSTALLATION IS RECOMMENDED
- NOT FOR USE WITH COPPER TO COPPER APPLICATIONS.
- DIMENSIONS IN BRACKETS [] ARE IN MILLIMETERS ROUNDED OFF TO THE NEAREST MILLIMETER, UNLESS OTHERWISE NOTED, AND ARE FOR REFERENCE ONLY.
- CATALOG #PT6515 ADAPTOR IS REQUIRED TO USE "U" DIES IN Y45 SERIES TOOLS.
- CATALOG #PUADP-1 ADAPTOR IS REQUIRED TO USE "U" DIES IN Y46 SERIES TOOLS.
- INDEX NUMBER 936 GIVES A HEXAGONAL CRIMP.

<p>TO ORDER BURNDY® PRODUCTS CALL</p> <p>UNITED STATES 1-800-346-4175 (LONDONDERRY, NH)</p> <p>CANADA: 1-800-361-6975 (QUEBEC) 1-800-387-6487 (ALL OTHER PROVINCES)</p> <p>FOR PRODUCT INFO: http://www.burndy.com</p>	HYREDUCER™	
	ITEM NO:	N/A
	CAT. NO:	YRB-U- (TABLE)
	DRAWN BY:	R.PERREault 04/30/96
	CHECKER:	J.MICHAUD 05/01/96
	DSN APPVL:	C.PALAGI 11/13/95
	MFG APPVL:	N/A --
	QA APPVL:	D.VARIO 12/21/95
	MKT APPVL:	L.HERRON 11/28/02
	PROJ #:	--
PROJECT #:	--	
DOCUMENT TYPE:	Sales	
REL LEVEL:	Released	
SCALE:	1:1	
DRAWING NO:	SD074136	
REV:	E	
SHEET 5 OF 5		

REV: PE0200

8 7 6 5 4 3 2 1