



INDUCTION MOTORS

Frame size 90mm sq. (3.54 in. sq.)

Single-Phase, Three-Phase

LEAD WIRE TYPE

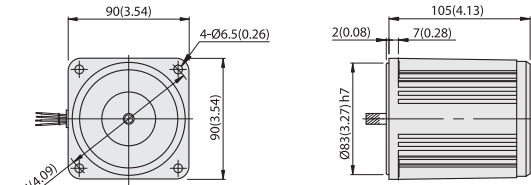
40W (1/18.5 HP)

DIMENSIONS

SPEED-TORQUE CURVE

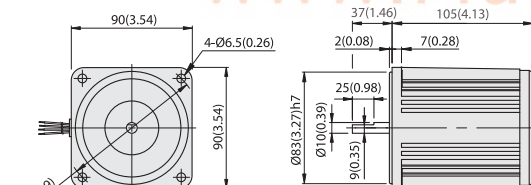
Unit : mm(inch)

E9140P□L



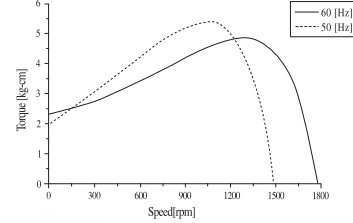
WEIGHT 2.5kg (5.5 lb)

E9140D□

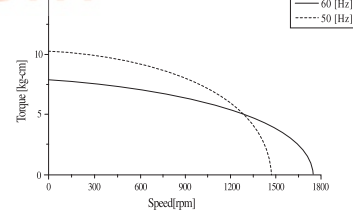


WEIGHT 2.5kg (5.5 lb)

Single phase E9140□□

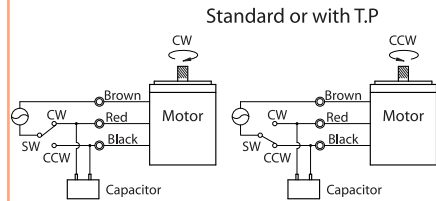
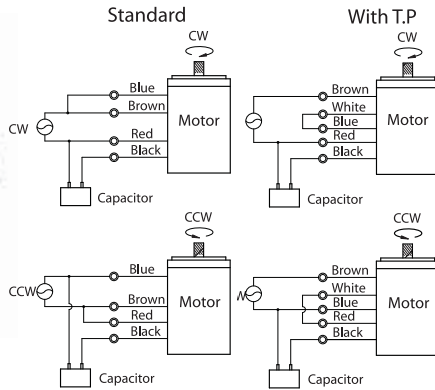


Three phase E9140□□

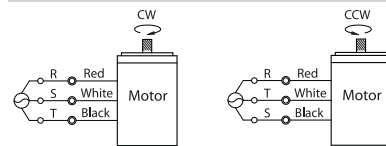


CONNECTION DIAGRAMS (4-lead wire type)

CONNECTION DIAGRAMS (3-lead wire type)



CONNECTION DIAGRAMS (3 phase)



The direction of rotation is seen from the end of motor shaft.

SPECIFICATIONS

CONTINUOUS DUTY, INSULATION CLASS A or E, 4POLES

Model	Output		Voltage (V)	Frequency (Hz)	Rated						Starting Torque			Capacitor (µF)
	(HP)	(W)			Input (W)	Current (A)	Torque (kg-cm, N-m, oz-in)		Speed (rpm)	(kg-cm)	(N-m)	(oz-in)		
E9140□C	1/18.5	40	1Ø100	50	80	0.80	3	0.294	41.66	1300	2	0.196	27.77	10
E9140□D	1/18.5	40	1Ø200	50	80	0.40	3	0.294	41.66	1300	2.4	0.235	33.33	3
E9140□B	1/18.5	40	1Ø220	60	85	0.4	2.5	0.245	34.72	1600	2.4	0.235	33.33	2.5
E9140□E	1/18.5	40	1Ø115	60	80	0.80	2.6	0.255	36.11	1550	2	0.196	27.77	8
E9140□X	1/18.5	40	1Ø220-240	50	90	0.45	3	0.294	41.66	1300	2.7	0.265	37.49	2.5
E9140□U	1/18.5	40	3Ø200	50	100	0.33	3	0.294	41.66	1300	8.75	0.858	121.51	-
E9140□U	1/18.5	40	3Ø200	60	100	0.32	2.6	0.255	36.11	1550	6.5	0.637	90.27	-
E9140□T	1/18.5	40	3Ø200-230	50	100	0.38	2.9	0.284	40.27	1350	11	1.078	152.76	-
E9140□T	1/18.5	40	3Ø200-230	60	100	0.32	2.5	0.245	34.72	1600	8.5	0.833	118.04	-
E9140□S	1/18.5	40	3Ø380-415	50	100	0.22	2.9	0.284	40.27	1350	11	1.078	152.76	-
E9140□S	1/18.5	40	3Ø380-415	60	100	0.19	2.5	0.245	34.72	1600	8.5	0.833	118.04	-
E9140□R	1/18.5	40	3Ø440	50	100	0.19	2.9	0.284	40.27	1350	11	1.078	152.76	-
E9140□R	1/18.5	40	3Ø440	60	100	0.16	2.5	0.245	34.72	1600	8.5	0.833	118.04	-

*Model in grey screen represents the motors with THERMALLY PROTECTED according to UL regulation.
 *Model in dark grey screen represents the motors with THERMALLY PROTECTED according to CE regulation.
 *In case of some models certificated for export, the special cord like CE or UL is added after the existing model no. ex) E9160I DXH-CE, E9160I IEH-UL.
 *Insulation class for motors which acquired certificates for export is B.



GEARHEADS

Frame size 90mm sq. (3.54 in. sq.)

METAL TYPE & BALL BEARING TYPE

DIMENSIONS

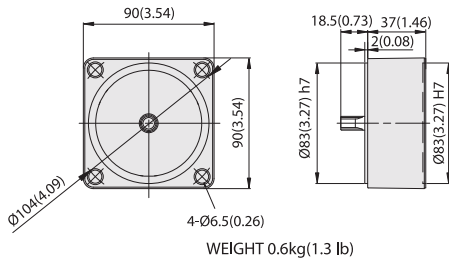
DECIMAL GEARHEAD

GEARHEAD

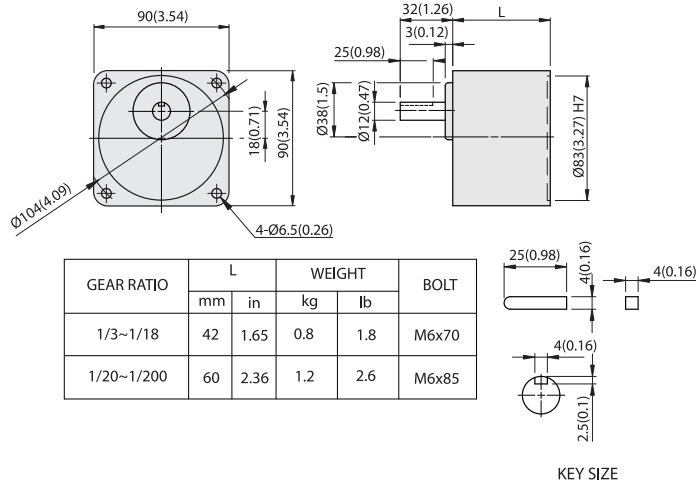
Unit : mm(inch)

E9G10D

E9HK□M(B)

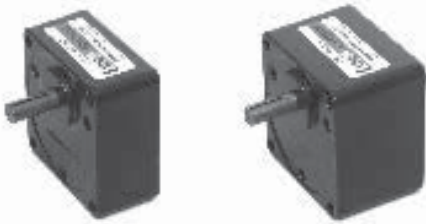


WEIGHT 0.6kg(1.3 lb)

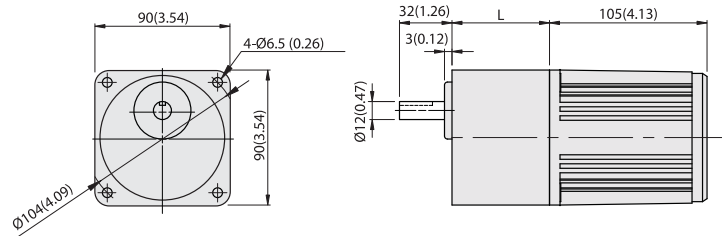


GEAR RATIO	L		WEIGHT		BOLT
	mm	in	kg	lb	
1/3~1/18	42	1.65	0.8	1.8	M6x70
1/20~1/200	60	2.36	1.2	2.6	M6x85

KEY SIZE



E9HK□M(B) + E9I40P□L



RATED TORQUE OF GEARHEAD

www.MuGuL.com

MODEL	Speed(rpm)	500	300	200	120	100	60	50	30	20	15	10	9	
		Ratio	50Hz	3	5	7.5	12.5	15	25	30	50	75	100	150
		60Hz	3.6	6	9	15	18	30	36	60	90	120	180	200
E9HK□M E9HK□B		kg-cm	7.3	12.2	18.2	30.4	36.4	54.8	65.7	99.0	100	100	100	100
		N-m	0.71	1.19	1.79	2.98	3.57	5.37	6.44	9.70	9.80	9.80	9.80	9.80
		oz-in	101	169	253	422	506	760	912	1375	1389	1389	1389	1389

- * The normal torque is that the motor and gearhead are directly coupled.
- * Insert the denominator of reduction ratio in □ of gearhead model name.
- * Actual rotation speed is 2~15% less than synchronous speed.
- * Color indicates that the rotation of gearhead shaft is in opposite direction as output shaft of motor.