

# Safe-Lec 2 Collectors & Shoes

Safe-Lec 2 “V-Contact” Collectors articulate to accurately track in the conductor bar groove for superior conductivity. Includes long-wearing copper graphite shoe (in holder) and shunt wires as noted below. The green “ground” (earth) collectors are available without “deflector”, or with either right-hand or left-hand deflector. Deflectors prevent the ground collector from coming in contact with adjacent phase collectors. For recommendations about choosing collectors see Appendix I, Pg. 57.

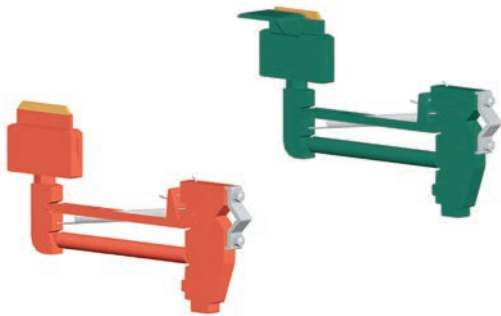
## 50A Collectors



Collector shoe shunt wire is integrated into the arm. Incoming cable is connected to the terminal lug at the base of the collector (maximum 8 AWG).

TYPE	Part No.	Wt lb (kg)
Phase (Red)	<b>399360</b>	0.84 (0.38)
Ground, w/o Deflector	<b>399380</b>	0.85 (0.39)
Ground, with RH Deflector	<b>399373</b>	0.87 (0.39)
Ground, with LH Deflector	<b>399372</b>	0.87 (0.39)

## 100A Collectors



Collector shoe shunt wire is integrated into the arm. Incoming cable is connected to the terminal lug at the base of the collector (maximum 2 AWG).

TYPE	Part No.	Wt lb (kg)
<b>Phase (Red)</b>	<b>310990</b>	<b>1.74 (0.78)</b>
Ground, w/o Deflector	<b>399355</b>	1.74 (0.78)
Ground, with RH Deflector	<b>399340</b>	1.80 (0.82)
Ground, with LH Deflector	<b>399352</b>	1.80 (0.82)

### Collectors used with Pick-up Guides Only, See Pg. 20.

Phase (Red)	<b>310988</b>	2.42 (1.09)
Ground	<b>399358</b>	2.42 (1.09)

## 200A Collectors



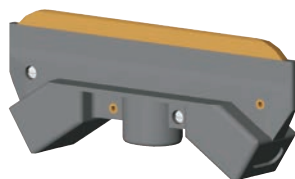
Two 2 AWG cables, 42” long, are connected to the collector shoe. Incoming cables splice directly to the shunt wires.

Type-Color	Part No.	Wt lb (kg)
Phase (Black)	<b>34956</b>	4.16 (1.89)

## Collector Shoe & Holder



50A / 100A Collector Shoe and Holder  
**310993**



200A Collector Shoe and Holder  
35289

Current Rating	50A & 100A Phase (Red)	50A & 100A Ground (Green)	50A & 100A with Deflector (Green)	200A
Part No.	<b>310993</b>	<b>399357</b>	<b>399356</b>	<b>35289</b>
Wt lb (kg)	<b>0.185 (0.08)</b>	0.07 (0.03)	0.25 (0.11)	0.45 (0.20)