

The background of the entire advertisement is a high-angle photograph of a modern industrial factory. A prominent feature is a long, curved conveyor belt system with numerous yellow rollers, curving through the center of the frame. Various pieces of industrial machinery, including rollers, control panels, and workstations, are visible throughout the facility. The floor is a light-colored, polished concrete. In the foreground, a person's hands are holding a tablet computer, which is the focus of the lower half of the image. The tablet screen displays a menu of software products, each preceded by a red play button icon. The text on the tablet is in a bold, red, sans-serif font. At the bottom of the tablet screen, there is a 3D rendering of several interlocking puzzle pieces in white and red, with the text 'IBHsoftec' and 'S5/S7 for Windows' visible on them. The overall lighting is bright and even, typical of an industrial environment.

The World of S5/S7

- ▶ S5/S7 for Windows®
- ▶ IBH Link UA **NEW!**
- ▶ IBH Link
- ▶ OPC
- ▶ SoftPLC



S7 for Windows®

The screenshot displays the S5/S7 for Windows software interface. The main window shows a ladder logic program for a PLC, specifically a segment titled "Position PH02". The program includes a network with a timer T1 and a set coil (S) for "ST1_SCHR18". The network is triggered by a normally open contact labeled "HA12.0" with the comment "//ROBA w". Below the network, a symbol table lists the variables used in the program:

Value	Symbol	Operand	Data type	Comment
DB 10		DB 10	FB 10	Position Level 54

The interface also shows a project tree on the left, a status bar at the bottom, and a hardware configuration window in the foreground. The hardware configuration window displays a list of modules, including a PS 307 5A power supply, a CPU 315-2 DP, and various digital and analog input/output modules.

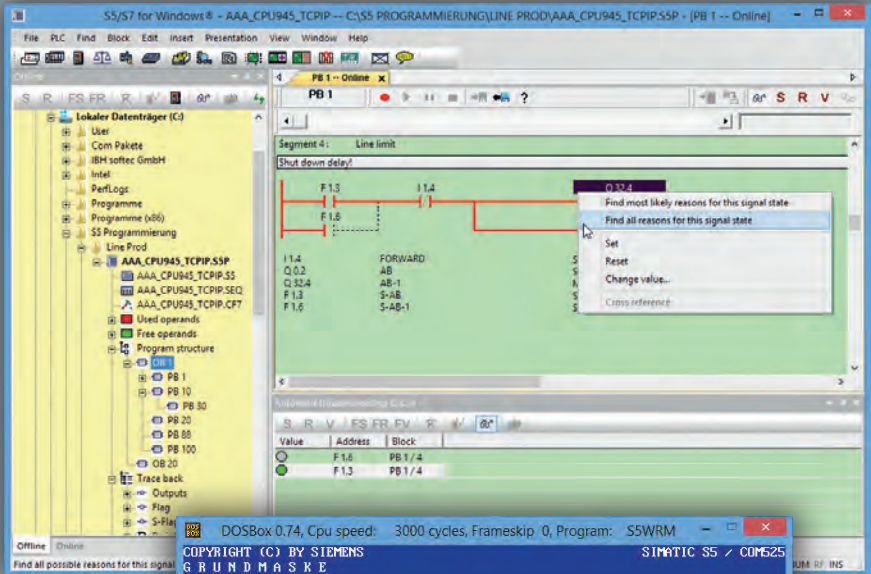


www.ibhsoftec.com/S7W-Eng

Programming tool for the SIMATIC S7-300 and S7-400 series

- ▶ Windows® 10 support
- ▶ Can be combined with S5 for Windows® or runs stand-alone
- ▶ Complete S7 instruction set implemented in the presentations Statement List (STL), Function Block Diagram (SFC) and Ladder Diagram (LAD)
- ▶ Status of variable views and symbolic tables
- ▶ STEP7-projects can be edited directly without im-/export
- ▶ Conversion from S5- to S7-programs
- ▶ Integrated S7-Simulation
- ▶ Comfortable block comparison (BlockDiff)
- ▶ Fully automated debugging without program adaption
- ▶ Oscilloscope feature
- ▶ OsciCAM®: analyze motion processes through synchronisation of previously recorded videos and process signals
- ▶ Statusrecorder: dynamic procedures can be explored by subsequently analysis of the block status frame by frame
- ▶ LogView: graphical representation and synchronisation of measurements
- ▶ IntelliSense: intelligent input assistance
- ▶ Hardware configuration
- ▶ Hardware catalogue can be extended with GSD-files
- ▶ Hardware catalogue can be updated over internet
- ▶ Driver for Siemens USB S5/S7 Prommer available

S5 for Windows®



www.ibhsoftec.com/S5W-Eng

Programming tool designed for programming the Siemens PLC family SIMATIC S5 with STEP 5

- ▶ Windows® 10 support
- ▶ Can be combined with S7 for Windows® or runs stand-alone
- ▶ Multiple segments can be shown in the status display
- ▶ Statement List (STL), Function Block Diagram (SFC) and Ladder Diagram (LAD) presentations
- ▶ Projects are compatible to the original Siemens programming tool
- ▶ STEP5-projects can be edited directly without im-/export
- ▶ Integrated S5-Simulation
- ▶ Comfortable block comparison (BlockDiff)
- ▶ Emulator to call original COM-Packages
- ▶ Online on SIMATIC S5 via SINEC L2 with the IBH Link S7++
- ▶ Graphical Step Sequence Programming
- ▶ Fully automated debugging without program adaption
- ▶ Oscilloscope feature
- ▶ OsciCAM®: analyze motion processes through synchronisation of previously recorded videos and process signals
- ▶ Statusrecorder: dynamic procedures can be explored by subsequently analysis of the block status frame by frame
- ▶ LogView: graphical representation and synchronisation of measurements
- ▶ IntelliSense: intelligent input assistance
- ▶ Driver for Siemens USB S5/S7 Prommer available

SoftPLC S7-315/S7-416

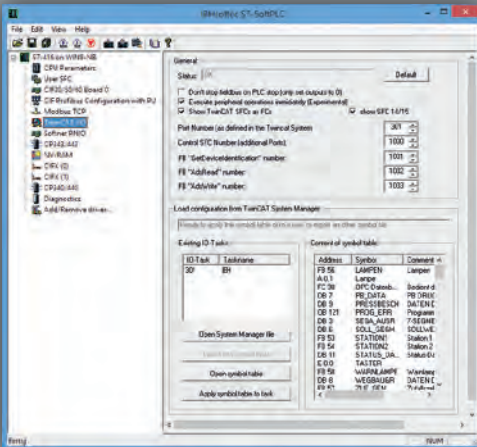


www.ibhsofttec.com/SoftPLC-416-Eng

Product number S7-315 #1300
Product number S7-416 #1302

SoftPLC S7

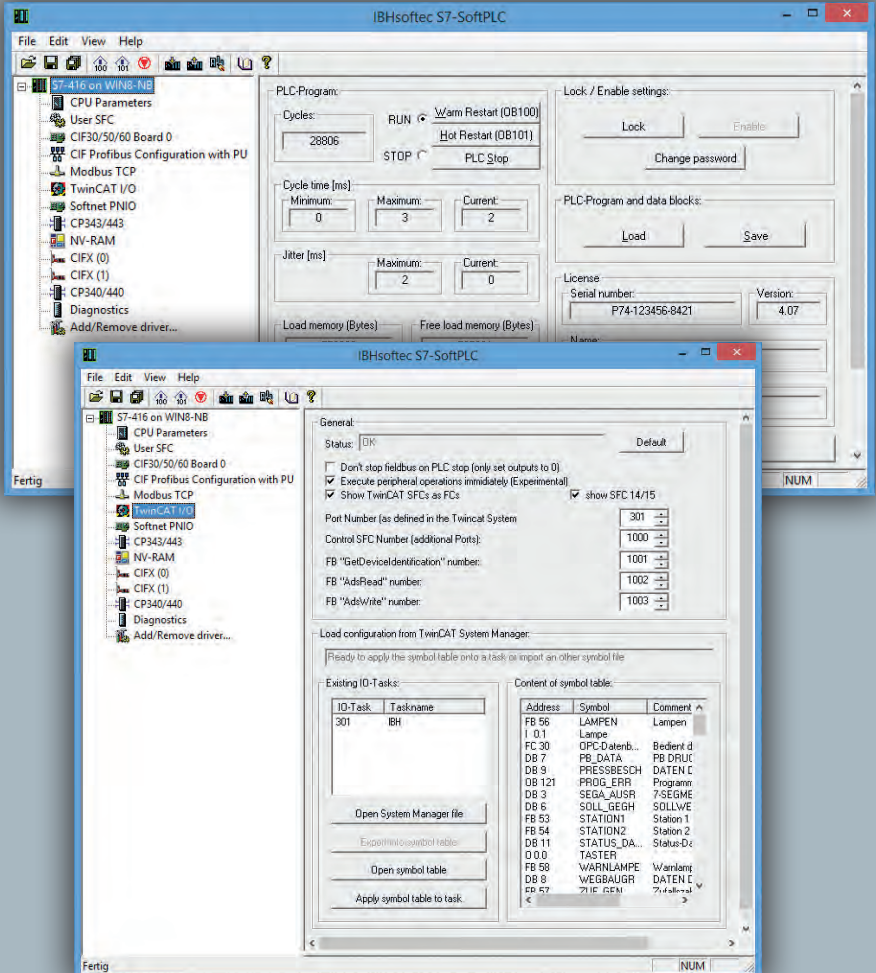
The IBH SoftPLC S7-315 / S7-416 executes a program in the same manner as a hardware PLC. The advantage of executing a PLC program this way is, that the PLC status can be displayed in real time. Since the Soft PLC behaves like an original SIMATIC PLC, the programming tools S7 for Windows® and STEP 7 can be used. The SoftPLC allows process monitoring, operation and control from one hardware unit. The use of the Soft-PLC is especially useful if a PC for data collection, process visualization, programming, or any other reason needs to be used anyway. A SoftPLC solution eliminates the need for a hardware PLC and the corresponding communication processor.



Supported Fieldbussystems

Fieldbus card/-system	Hilscher	Beckhoff
Lightbus	–	✓
PROFIBUS	✓	✓
PROFINET I/O	✓	–
Interbus	✓	✓
DeviceNet	✓	✓
AS-i	✓	✓
CANopen	✓	✓
sercos	✓	✓
EtherCAT	✓	✓

SoftPLC S7-315/S7-416



www.ibhsoftec.com/SoftPLC-416-Eng

Product number S7-315 #1300

Product number S7-416 #1302

SoftPLC S7

- ▶ Windows® 8 (32-Bit and 64-Bit) support
- ▶ Access to the field bus (e.g. PROFIBUS-DP, PROFINET, EtherCAT, etc...) with field bus master cards from Hilscher and Beckhoff or with standard I/O boards.
- ▶ Direct access with S7 for Windows®, OPC Server, STEP 7 or DLL
- ▶ Online functions possible using ISO-on-TCP (RFC1006), Modbus TCP, IBHNet driver or PROFIBUS
- ▶ PLC-PLC communication with various Ethernet protocols
- ▶ CP 343/443 emulation
- ▶ I/O monitor
- ▶ Display the diagnostic buffer without programming tool
- ▶ For our OEM-Customers the company Hilscher Gesellschaft für Systemautomation mbH provides our PLC kernel on the netX 500 Chip
- ▶ For our OEM-Customers a Windows CE version is available
- ▶ Also available as a pure Simulation PLC

SoftPLC S5-943/S5-945

Product number S5-943 #1204

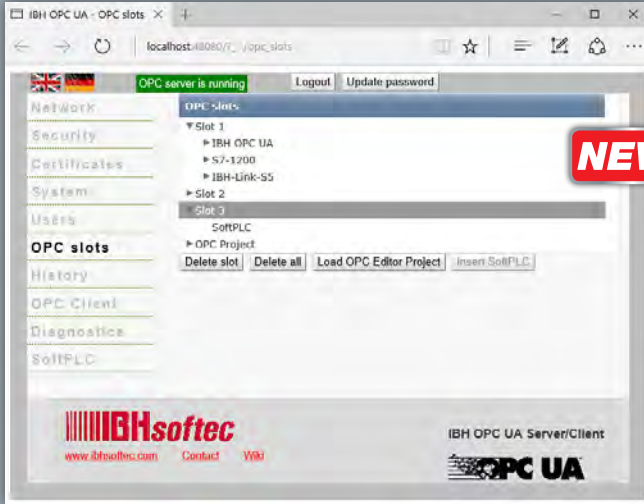
Product number S5-945 #1206

The SoftPLC is also available as S5 version. Since the SoftPLC behaves like an original SIMATIC PLC, the programming tools S5 for Windows® and STEP5 can be used. Access to the field bus (e.g. PROFIBUS-DP, PROFINET, EtherCAT, etc...) can be made with field bus master cards from Hilscher and Beckhoff or with standard I/O boards.



www.ibhsoftec.com/SoftPLC-945-Eng

IBH OPC UA Server/Client



- ▶ OPC UA Server for easy connection to MES, ERP and SAP systems and visualizations
- ▶ OPC UA Client functions data exchange between different OPC UA Servers
- ▶ Integrated SoftPLC for data preprocessing
- ▶ Scalable security levels through exchange of digitally signed certificates
- ▶ Connection to S7-PLCs over S7 TCP/IP or IBH Link S7++
- ▶ Connection to S5-PLCs over IBH Link S5++
- ▶ Comfortable configuration with the IBH OPC Editor, Siemens STEP7 or the TIA Portal
- ▶ Handles up to 31 projects simultaneously
- ▶ Administration via web browser
- ▶ Historical Data
- ▶ Runs on Windows XP, Vista, Windows 7, Windows 8, Windows 10



www.ibhsoftec.com/IBH-OPC-UA-Server-Eng

Product number #1180



OPC UA Server/Client for the SIMATIC S5, S7-200, S7-300, S7-400, S7-1200, S7-1500 and LOGO! (Ethernet versions) PLC.

The configuration of the IBH OPC UA Server/Client is made with the free IBH OPC Editor, the Original Siemens STEP7 or the TIA Portal. There is no need for other special software. Thus, the IBH OPC UA Server/Client can be seamlessly integrated into the PLC project. The IBH OPC UA Server/Client can handle up to 31 STEP7 and / or TIA projects simultaneously.

The definition of the variables will be transferred from the programming tool to the IBH OPC UA Server/Client via Ethernet. The attributes of the variables (f.i. write protection or limits) will be defined directly within the PLC project. This allows symbolic access to variables and data block structures.

The communication to the S5 and S7 PLC is established over Ethernet. If the PLC has no Ethernet port, our well known gateways IBH Link S7++ or IBH Link S5++ can be used.

One of the advantages of the solution from IBHsoftec is, that the IBH OPC UA supports Client and Server functions simultaneously. This allows data exchange between different OPC UA Servers. For example control systems and other equipment with OPC UA servers from different manufacturers can exchange data with each other. The configuration of the client functions can be made using a standard web browser.

IBH Link UA

The compact OPC UA server
for S5- and S7-PLC



- ▶ OPC UA Server for easy connection to MES, ERP and SAP systems and visualizations
- ▶ OPC UA Client functions for S7 PLC to connect to external OPC UA server systems
- ▶ 4 Ethernet Ports with Firewall → clean separation of machine and supervision level
- ▶ Scalable security levels through exchange of digitally signed certificates
- ▶ Connection to S7-PLCs over S7 TCP/IP or IBH Link S7++
- ▶ Connection to S5-PLCs over IBH Link S5++
- ▶ Comfortable configuration with the IBH OPC Editor, Siemens STEP7 or the TIA Portal
- ▶ Handles up to 31 projects simultaneously
- ▶ Administration via web browser
- ▶ Historical Data
- ▶ No need for runtime licenses



www.ibhsofttec.com/IBH-Link-UA-Eng

Product number #3200



The IBH Link UA is an OPC UA Server/Client module with integrated firewall for the SIMATIC S5, S7-200, S7-300, S7-400, S7-1200, S7-1500 and LOGO! (Ethernet versions) PLC. It is a compact unit for DIN rail mount with four Ethernet ports and a 24V power supply.

The configuration of the IBH Link UA is made with the free IBH OPC Editor, the Original Siemens STEP7 or the TIA Portal. There is no need for other special software. Thus, the IBH Link UA can be seamlessly integrated into the PLC

project. The IBH Link UA can handle up to 31 STEP7 and / or TIA projects simultaneously.

The definition of the variables will be transferred from the programming tool to the IBH Link UA via Ethernet. The attributes of the variables (f.i. write protection or limits) will be defined directly within the PLC project. This allows symbolic access to variables and data block structures.

The communication to the S5 and S7 PLC is established over Ethernet. If the PLC has no Ethernet port, our well known gateways IBH Link S7++ or IBH Link S5++ can be used. There are three Ethernet Ports for machine level on the IBH Link UA and one Ethernet Port for the supervision level. On the supervision level only OPC access is allowed. Between both levels there is a firewall integrated. The configuration of the Ethernet ports can be made using a standard web browser.

OPC Client functions can also be called directly within the PLC program to allow communication with PLCs of other manufacturers via OPC UA. Therefore, handling blocks in STL are provided, which use PUT/GET functions for the communication with the IBH Link UA.

IBH Link S7++



IBHsoftec IBHLink S7++

Home | Configuration | Diagnostics | Change Password

Connected PROFIBUS Devices:

Address	Status	Type	Manufacturer
1	M ?	---	---
2	M	6GK7 342-5DA00-0XE0	---
3	S	IL PB BK DPV1 (DIP)	Phoenix Contact
4	M	6ES7 151-8AB01-0AB0	Original Siemens Equipment

S7 Diagnostics:

Serial number: S C-B3WE94862011
Station name: IM151 PN/DP Demo Project
Module name: IM151-B PN/DP CPU
Plant designation: Demonstration
Location designation: Development dept.
Operating mode: RUN
Module time: Montag, 30. Januar 2012 12:59:40
Diagnostic buffer: Event 5/10

Mode transition from STARTUP to RUN
Samstag, 26. Januar 2012 11:33:40

Startup information:
- Time for time stamp at the last backed up power on
- Single processor operation
Current/last startup type:
- Warm restart triggered via MPI, last power on backed up
Permissibility of certain startup types:
- Manual warm restart permitted
- Automatic warm restart permitted
Last valid operation or setting of automatic startup type at power on:
- Warm restart triggered via MPI, last power on backed up
Previous operating mode: No voltage
Requested operating mode: No voltage (PK 68)
Event entering state

10 S MOVDRIVE DPP21/MCH41 SEW-EURODRIVE



The IBH Link S7++ is a gateway from Ethernet to MPI/PROFIBUS (Class 2 Master), available inside the connector housing, or for DIN rail mount.



www.ibhsoftec.com/IBH-Link-S7-PP-Eng

Product number S7++ #20266
Product number S7++ HS #20268

Cost efficient Ethernet-PROFIBUS-Gateway for programming, drive configuration, for communication between PC and Siemens PLCs, inter-PLC communication and FDT applications

- ▶ CommDTM for FDT container available for free
- ▶ Master Class 2 for acyclic services (DPV1)
- ▶ Read the diagnostic buffer via web browser
- ▶ PROFIBUS-Slave Diagnostic
- ▶ Online to SIMATIC S5 via SINEC L2
- ▶ Configuration via web browser
- ▶ IPv6 support
- ▶ Configuration via NetPro
- ▶ Windows® 8 (32-Bit and 64-Bit) support
- ▶ STEP 7 (32-Bit and 64-Bit) support
- ▶ Time synchronisation
- ▶ PROFIBUS diagnostic
- ▶ Setting of slave Parameter via DPV1
- ▶ Data set routing
- ▶ Drive configuration
- ▶ Integration within the TIA portal
- ▶ DHCP
- ▶ S7 routing via RFC1006
- ▶ Fetch/Write via RFC1006
- ▶ PLC-PLC communication
- ▶ Process data access with other PLC, Windows and Linux
- ▶ Support for STARTER, S7-PCT, PDM, LifeList, COM PROFIBUS
- ▶ Setting and diagnostic of field devices with TCI
- ▶ Up to 16 parallel PC connections at the same time
- ▶ Up to 32 parallel MPI / DP connections at the same time
- ▶ Automatic bus profile detection
- ▶ PG-connector
- ▶ RJ45 Ethernet (10/100) with autonegotiation
- ▶ Diagnostic LEDs
- ▶ Power supply from the MPI / DP interface (S7++ only)
- ▶ External 24V supply possible



www.ibhsoftec.com/IBH-Link-S7-PP-HS-Eng

IBH Link S5++ *Product number #20284*

Cost efficient Ethernet-PLC-Gateway for the communication between PC and SIMATIC S5 PLC.



- ▶ Standard-TCP/IP protocol
- ▶ Direct access with S5 for Windows®
- ▶ Driver for STEP 5 from V7.16 included
- ▶ Access of S7-HMI-Devices via RFC1006
- ▶ Programming functionalities for HMI-Applications
- ▶ API for HMI-Applications included
- ▶ Configuration via USB possible
- ▶ FETCH/WRITE protocol supported



www.ibhsoftec.com/IBH-Link-S5-PP-Eng

USB S5/S7 Prommer

Product number #2008

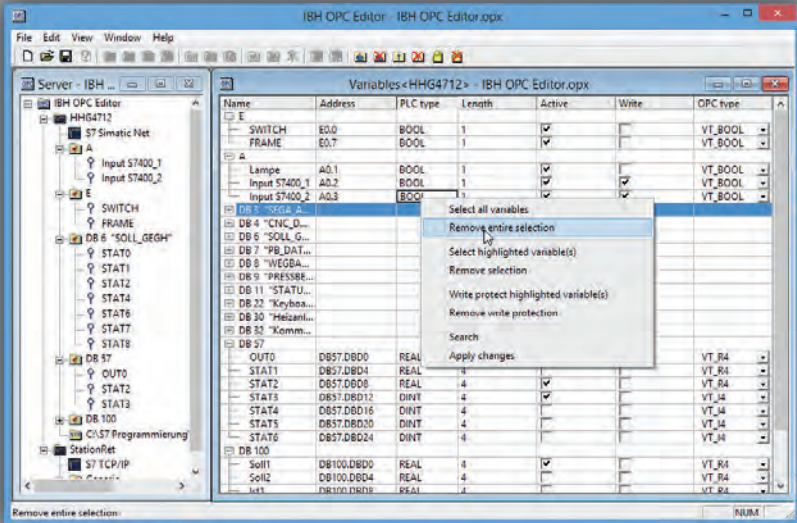
64 Bit Driver for the programming tool
S5/S7 for Windows®



- ▶ S5 EPROM Modules
- ▶ S5 EEPROM Modules
- ▶ S5 Memory Cards
- ▶ S7 Memory Cards
- ▶ S7 Micro Memory Cards

OPC Server

Product number #1150



IBH OPC Server: easy automation

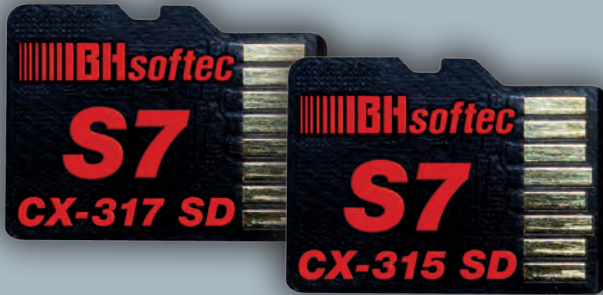
With the IBH OPC Server a visualization application can be linked to any SIMATIC PLC (including Ethernet enabled LOGO!) and IBHsoftec SoftPLCs.

- ▶ Windows® 8 (32-Bit and 64-Bit) support
- ▶ Reach your goals with just a few clicks
- ▶ Adopt the symbolic addressing of you PLC-program
- ▶ Many different communications like TCP/IP, H1, serial, USB possible ...
- ▶ Full featured demo version available for free



www.ibhsoftec.com/IBH-OPC-Server-Eng

S7 compatible PLC for the complete Beckhoff CX8000 series



The S7-CX SD cards turn an embedded PC of the Beckhoff CX8000 series into a S7 compatible PLC and allow the use of the reliable and flexible Beckhoff hardware.

- ▶ Including S7 for Windows® (Kit-Version)
- ▶ STEP7 compatible
- ▶ Full retentivity
- ▶ Ethernet CP
- ▶ EtherCAT
- ▶ Web server
- ▶ Modbus TCP Master / Slave

The S7-CX315 SD / S7-CX317 SD can be used with the complete CX8000 series. Next to EtherCAT, the fieldbus systems PROFIBUS, CANopen, RS232/RS485, PROFINET RT, EtherNet/IP and Sercos III are directly available on the device.



www.ibhsoftec.com/S7-CX315-SD-Eng

S7/S5-Interfaces

USB-S7 Adapter MPI, DP, PPI #20218

For S7-200, S7-300 oder S7-400

- ▶ Integrated LCD-Display shows the transmission rate and MPI/ DP address
- ▶ Membrane keypad for the adapter configuration
- ▶ Powered by the PC, no power supply necessary



www.ibhsoftec.com/USB-S7-Adapter-C-Eng



IBH USB-S5-Adapter #20220

- ▶ Driver for S5 for Windows® and STEP 5 from V7.16 included
- ▶ Powered by the PC, no power supply necessary



www.ibhsoftec.com/IBH-USB-S5-Adapter-Eng

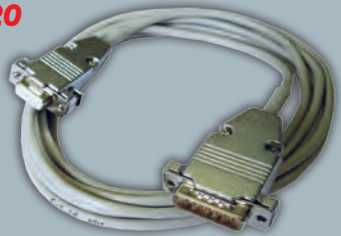


IBH S5-Current loop converter #2020

- ▶ For a serial connection between a PLC and a S5-PLC
- ▶ Fits the following PLCs: 90U, 95U, 100U, 101U, 115U, 135U und 155U



www.ibhsoftec.com/IBH-RS232-S5-Adapter-Eng

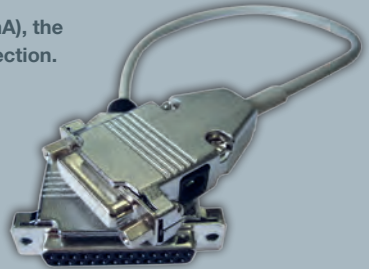


Constant Current Adapter for the IBH S5-Current loop converter #2042, #2044, #2046, #2048

- ▶ For PLCs, that are not supplying the loop current (2 x 20mA), the Constant Current Adaptor is required to establish a connection.



www.ibhsofttec.com/S5-Interface-Eng



USB S5/S7 Prommer (Siemens) #2008

- ▶ The USB S5/S7 Prommer works together with S5/S7 for Windows®, STEP 5 and STEP 7. 64 Bit Driver for S5/S7 for Windows® available



www.ibhsofttec.com/USB-S5S7-Prommer-S-Eng

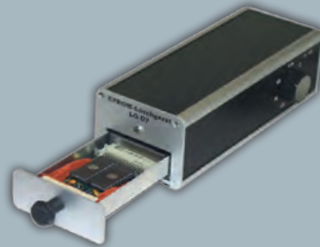


EPROM Eraser LG07 #2010

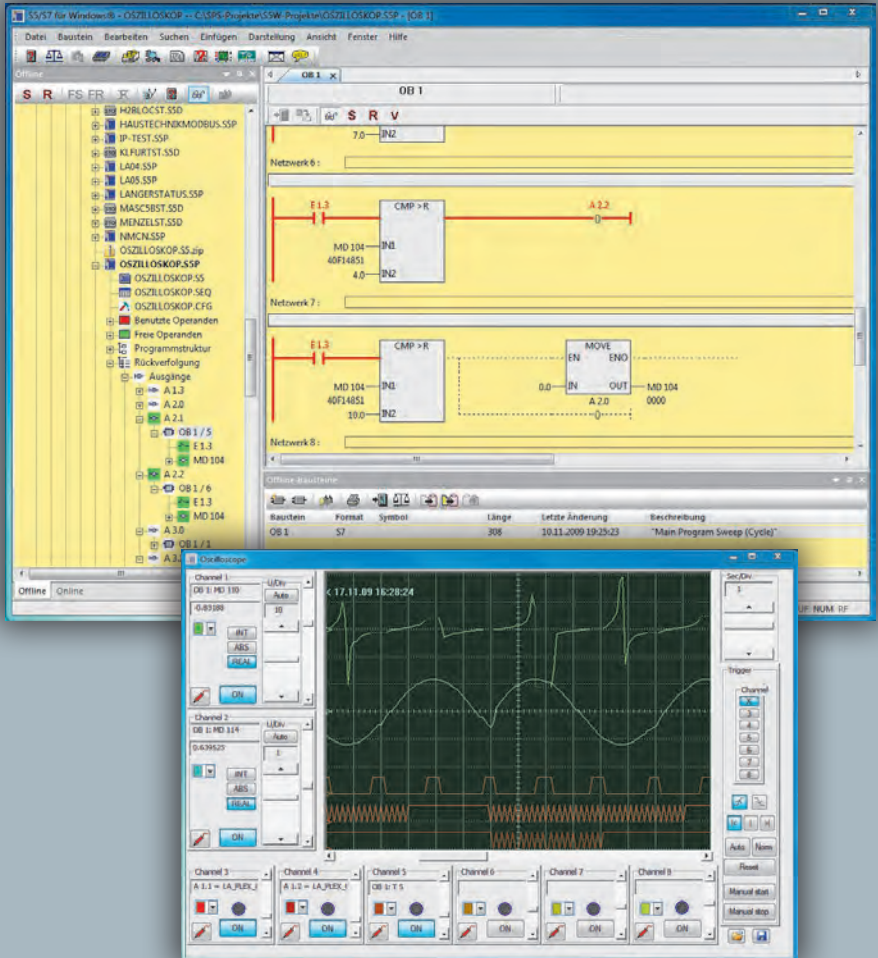
- ▶ Used to erase S5 modules and EPROMs



www.ibhsofttec.com/Eprom-Eraser-Lg07-Eng



S7 für Windows®



www.s7-software.com
Windows ist eine eingetragene Marke der Microsoft Corporation in den USA und/oder anderen Ländern.
Microsoft® ist eine eingetragene Marke der Microsoft Corporation in den USA und/oder anderen Ländern.



www.ibhsoftec.com/S7W

Programmier-Tool für die SPS-Steuerungsreihe SIMATIC® S7-300® und S7-400®

- ▶ Windows® 8 (32Bit- und 64-Bit) Unterstützung
- ▶ Mit S5 für Windows® kombinierbar oder auch als Einzelpaket ablauffähig
- ▶ Vollständige S7-Befehlssatz in der Darstellung AWL (Anweisungsliste), FUP (Funktionsplan) und KOP (Kontaktplan)
- ▶ Statusbetrieb mit Variablen- und Symboltabellen
- ▶ STEP®7-Projekte können direkt ohne Im-/Export bearbeitet werden
- ▶ Konvertierung von S5- nach S7-Programmen
- ▶ Integrierte S7-Simulation
- ▶ komfortable Bausteinvergleich (BlockDiff)
- ▶ Vollautomatische Fehlersuche ohne spezielle Anpassung des SPS-Programms
- ▶ Statusrecorder: Analyse von dynamischen Vorgängen durch nachträglich Analyse des Bausteinstatus)
- ▶ Oszilloskop- Funktionen
- ▶ OsziCam: Analyse von Bewegungsabläufen durch Synchronisation von Video und Signalverlauf
- ▶ LogView: Grafische Darstellung und Synchronisation von Messwerten
- ▶ IntelliSense: Intelligente Eingabehilfe
- ▶ Hardwarekonfiguration
- ▶ Einlesen von GSD Dateien
- ▶ Aktualisierungen des Hardwarekatalogs kostenlos per Internet



International Distributors



Australia

I S Systems Pty. Ltd.
Tomago NSW 2322
Tel. +61 2 4964 8548
Fax +61 2 4964 8877

ZI-ARGUS Pty. Ltd.
Silverwater NSW 2128
Tel. +61 280 903 630
Fax +61 280 903 649



Austria

ESA Elektro Automation
3322 Viehdorf
Tel. +43 7472 63098
Fax +43 7472 63098 20



Belgium

Rexel NV / SA
1731 Zellik
Tel. +32 248248 48
Fax +32 248248 49



Brazil

Orkan Informática
09726 Sao Bernardo
Tel. +55 11 412 56088
Fax +55 11 412 58811



China

Shanghai Vape Ltd.
201200 Shanghai
Tel. +86 21 61508196
Fax +86 21 58341766



Czech Rep.

Merz s.r.o.
460 01 Liberec
Tel. +420 485 100 272
Fax +420 485 100 273

SIDAT s.r.o.
158 00 Prag
Tel. +420 257 187 911
Fax +420 257 187 970



Denmark

PC SYS A/S
2605 Brøndby
Tel. +45 4343 2929
Fax +45 4343 2829



Egypt

Mas Trading
11431 Cairo
Tel. +202 25242842
Fax +202 25242842



Finland

Klinkmann Automation
00371 Helsinki
Tel. +358 9540 4940
Fax +358 9541 3541



France

Pantek Automation SA
77700 Mame La Vallée
Tel. +33 16463 40 28
Fax +33 16463 83 75

VIPA France SAS
75020 Paris
Tel. +33 14361 5225
Fax +33 14361 5345



Great Britain

Drawtrend Ltd.
Lancashire FY67LD
Tel. +44 125 388 2158
Fax +44 125 388 2158

Que Associates Ltd.
Warwick CV34 4HU
Tel. +44 1926 410 371
Fax +44 1926 410 372



Hungary

AD-DA kft
1124 Budapest
Tel. +36 1 214 0400
Fax +36 1 214 0400



India

SWA SYSTEMS
650078 Bangalore
Tel. +91 80 26663652
Fax +91 80 26663652



Indonesia

PT TDS Technology
West Java 17510
Tel. +62 21 8261 5966
Fax +62 21 4622 8752



Ireland

DC Automation
Goatstown Dublin 14
Tel. +353 1 4419187



Italy

iCon GmbH s.r.l.
39040 Vahrn
Tel. +39 0472 2009 70
Fax +39 0472 2009 62

Teleslar s.r.l.
28010 Vaprio d'Agogna
Tel. +39 0321 966 768
Fax +39 0321 996 281



Japan

Eifer Co., Ltd.
323-0622 Tochigi
Tel. +81 285377 005
Fax +81 285377 573



Malaysia

Intotest Sdn Bhd
75250 Melaka
Tel. +60 6 336 122 9
Fax +60 6 336 122 8



Namibia

IAE cc
9000 Windhoek
Tel. +264 61 30 53 13
Fax +264 61 12464 10



Netherlands

Digitron Electronics
1721 PV Langedijk
Tel. +31 6 22012036
Fax +31 847 580692



Newsealand

Horizon Technology Ltd.
Albany, Auckland
Tel. +64 914 0066
Fax +64 914 0055



Norway

Autic System A/S
3110 Tonsberg
Tel. +47 333 009 50
Fax +47 333 009 55



Poland

ENCON
54-620 Wrocław
Tel. +48 71 793 64 07
Fax +48 71 793 64 08

STERMAG s.c.
52-015 Wrocław
Tel. +48 71 718 33 24
Fax +48 71 718 33 25



Russia

Famoga Group
Moskua
Tel. +7 495 268 04 80
Fax +7 495 936 96 06

Giesbrecht Technology
Moskua
Tel. +7 496 75 59 320
Fax +7 496 75 59 320

GT Sensorika
Sankt Petersburg
Tel. +7 812 309 88 50
Fax +7 812 309 88 50



Singapore

TDS Technology
729493 Singapore
Tel. +65 6366 1661
Fax +65 6362 1661



Slovakia

FCC s.r.o.
811 04 Bratislava
Tel. +421 259 104 067
Fax +421 259 104 068



Slovenia

SMM proizvodni sistemi
2000 Maribor
Tel. +386 2 450 23 00
Fax +386 2 450 23 02



South Africa

RJ Connect cc
Ferndale 2194
Tel. +27 11 781 0777
Fax +27 11 781 7204



Spain

AN Consult España
28931 Mostoles
Tel. +34 9 1613 0031
Fax +34 9 1613 6506

ER-SOFT S.A.
28231 Las Rozas
Tel. +34 916 408 408
Fax +34 916 408 409



Sri Lanka

IMA Control HAILD
Moratuwa (Colombia)
Tel. +94 77 7703675
Fax +94 75551121



Sweden

Germatech AB
55473 Jönköping
Tel. +46 3634 6010
Fax +46 3616 8262



Thailand

PS Union Progress Co.
10230 Ladprao
Tel. +662 931 19945
Fax +662 931 1989



Turkey

EMIKON LTD. STI.
34776 Y.Dudullu
Tel. +90 216 420 83 45
Fax +90 216 420 83 48

ENDEIS
54000 Sakarya
Tel. +90 264 2784366
Fax +90 264 2784316



Ukraine

Giesbrecht Technology
24405 Winnitsa
Tel. +38 04352 21 669
Fax +38 04352 23 451



USA

Software Toolbox Inc.
Matthews, NC 28105
Tel. +1 704 849 2773
Fax +1 704 849 6388