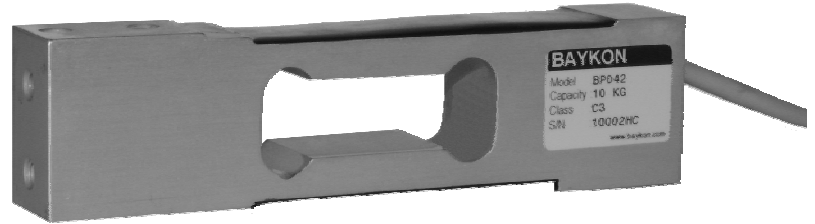


Type BP042 is an aluminum construction and adhesive sealed single point type loadcell. It is suitable for bench scale, counting scale, balance, packing machines and similar electronic weighing devices or systems.

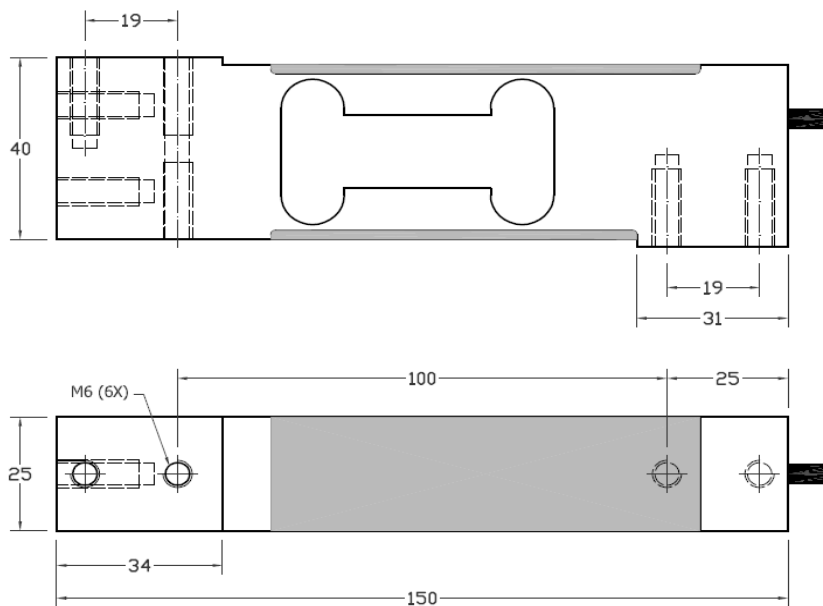


Key features;

- Capacities; 3 ~ 100 kg
- Aluminum construction
- OIML Approved
- Max. platform size: 400x400mm
- Protection IP65



Dimensions (mm);



Cable color codes;

+ input	red
+ output	green
+ sense	blue
- input	black
- output	white
- sense	brown
shield	transparance

Technical specifications;

Accuracy class (OIML R60)		C3		
Output sensitivity	RO	mV/V	2.0 ± 0.2	
Maximum capacity	E _{max}	Kg	3 / 5 / 8 / 10 / 15	20 / 30 / 50 75 / 100
Max. Number of load cell intervals	n _{LC}		3000	
Min. Load cell verification interval	v _{min}		E _{max} / 15000	E _{max} / 7500 E _{max} / 12000
Minumum dead load	E _{min}		0	
Safe overload		% E _{max}	150	
Zero balance		% RO	< ± 2	
Excitation ,recomended		V	5 - 12	
Excitation , maximum		V	18	
Input resistance		Ω	409 ± 6	
Output resistance		Ω	350 ± 3	
Insulation impedance		MΩ	≥ 5000 (50 VDC)	
Temperature range , compansated		°C	- 10 ... + 40	
Temperature range , operating		°C	- 35 ... + 65	
Material			Aluminium	
Protection class			IP65	
Max. Platform size recomended		mm	400 x 400	