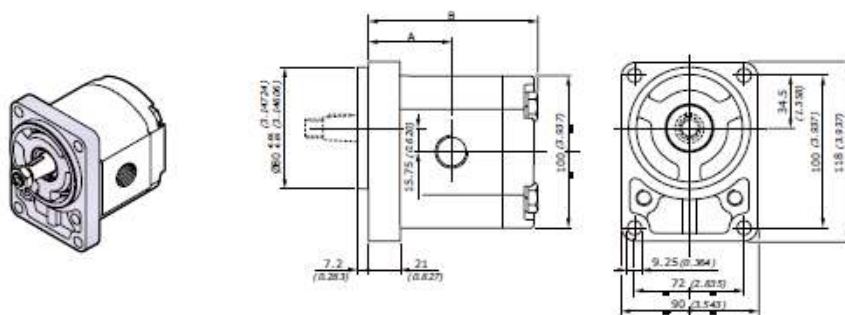


POMPE AD INGRANAGGI GRUPPO 2SP
GEAR PUMPS GROUP 2SP
FLANGIA TEDESCA B80C GERMAN FLANGE

GRUPPO GROUP 2SP	CILINDRATA DISPLACEMENT		PRESSIONE MAX - MAX PRESSURE						VELOCITÀ MAX MAX SPEED	PORTATA MAX MAX FLOW		VELOCITÀ MIN MIN SPEED	PORTATA MIN MIN FLOW		RENDIMENTO VOLUMETRICO MIN. MIN. VOLUMETRIC EFFICIENCY
			P1		P2		P3			l/min	Gal/min		l/min	Gal/min	
	cm ³ /giri	in ³ /rev	bar	psi	bar	psi	bar	psi	giri/min - rpm			giri/min - rpm			giri/min - rpm
2SP 040	4	0.24	250	3625	270	3915	290	4205	4000	16	4.23	500	1.9	0.50	95*
2SP 060	6	0.37	250	3625	270	3915	290	4205	4000	24	6.34	500	2.85	0.75	95*
2SP 080	8.5	0.52	250	3625	270	3915	290	4205	3500	29.7	7.85	500	4.03	1.06	95*
2SP 110	11	0.67	250	3625	270	3915	290	4205	3500	38.5	10.17	500	5.22	1.38	95*
2SP 140	14	0.85	250	3625	270	3915	290	4205	3500	49	12.95	500	6.65	1.76	95*
2SP 160	16.5	1.01	230	3335	240	3480	250	3625	3500	57.7	15.24	500	7.83	2.07	95*
2SP 190	19.5	1.19	210	3045	220	3190	230	3335	3300	64.3	16.99	500	9.26	2.45	95*
2SP 220	22.5	1.37	190	2755	200	2900	210	3045	2800	63	16.64	500	10.68	2.82	95*
2SP 260	26	1.59	170	2465	180	2610	190	2755	2500	65	17.17	500	12.35	3.26	95*
2SP 310	31.5	1.92	130	1885	140	2030	150	2175	2200	69	18.22	500	15.75	4.16	95*

DIMENSIONI • DIMENSIONS


GRUPPO - GROUP 2	A		B		MASSA - MASS	
	mm	inch	mm	inch	kg	lbs
2SP 040	46.4	1.827	95.0	3.740	2.30	5.07
2SP 060	48.0	1.890	98.3	3.870	2.45	5.40
2SP 080	50.1	1.972	102.5	4.035	2.60	5.73
2SP 110	52.2	2.055	106.6	4.197	2.70	5.95
2SP 140	54.7	2.154	111.6	4.394	2.80	6.17
2SP 160	56.8	2.236	115.8	4.559	2.95	6.51
2SP 190	59.3	2.335	120.8	4.756	3.10	6.84
2SP 220	61.8	2.433	125.8	4.953	3.25	7.17
2SP 260	64.7	2.547	131.6	5.181	3.40	7.50
2SP 310	68.9	2.715	140.0	5.516	3.61	7.96