

## Product Information Model 6012 Mould (three-gang design)

### Application

Preparation of prism shaped samples, 40x40x160 mm made of mortar, especially cement mortar in accordance with the standards EN 196-1, ISO 679, DIN EN 12808-4, EN 1015-11 and ASTM C 348. Design and accuracy according to the schedule „Technical Data“.

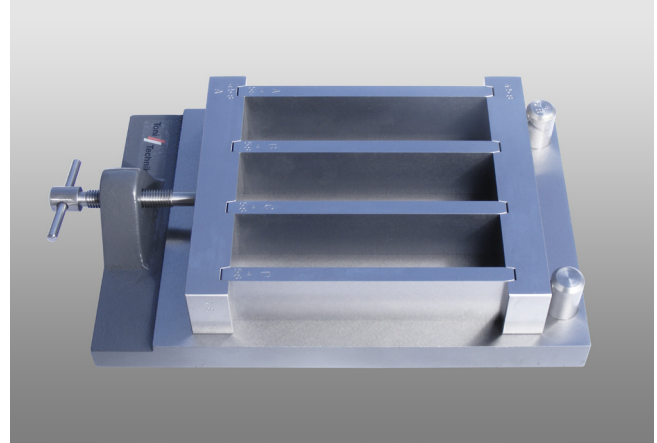
### Design

Precision design in high quality steel. The mould parts, consisting of head ends and separation bars, are fixed on the cast iron base plate using a clamp screw and counter bearings. High precision keyseats tighten the joints between parts during compacting.

The compliance of the size tolerances to the respective standard can be certified on request.

### Advantages

- head ends and separation bars are separately marked to secure the fitting
- a tommy screw enables precise pressure without wedging the parts
- the design of the base plate and the surface finishing avoid a deformation of the mould
- by use of a brass straight edge the mould guarantees the required dimensional stability long-termed
- the mould is available alternatively with or without holes for shrinkage tests
- compatible with all components of the ToniLAB
- because of the small weight tolerances the mould is adaptable to instruments of other manufacturers



Mould in three-gang design

### Available Models

#### Mould, model 6012

for prisms 40x40x160 mm according to EN 196-1, ISO679, ASTM C 348; made of steel;

#### Mould, model 6012.50

for prisms 40x40x160 mm according to EN 196-1, ISO679, ASTM C 348; made of stainless steel;

#### Mould, model 6021

for prisms 40x40x160 mm, according to DIN 1164-7 and EN1015-11; made of steel;

All models are available with or without holes for shrinkage tests (see „Technical Data“).

## Product Information Model 6012

### Mould for Mortar Prisms (three-gang design)

#### Suitable Accessories

##### Feeding Hopper, model 6012.001

made of aluminium; for easy filling and compacting

##### Mould Removal Bracket, model 6012.002

made of cast iron; for a smooth removal of the samples

##### Cover Frame, model 6012.003

made of cast iron; for preparation of shrinkage specimens

##### Tamper, model 6012.004

made of wood with a brass cap  
for bending samples 150 x 20 mm

##### Tamper 6012.005

made of wood with a brass cap  
for shrinkage samples 110 x 20 mm

##### Tamper 6012.006

made of wood with a brass cap  
7/8" x 3 1/4" according to ASTM C 348

##### Straightedge, model 6012.007

made of brass, 400 mm length

##### Spreader 6012.008

made of brass with two different side lengths for equal spreading of the mortar in two layers

##### Glass plate 6012.009

to cover freshly filled molds, 210x185 mm, 6 mm thick

##### Torque wrench 6012.010

made of steel, to pre-stress the mould with a defined and reproducible torque

##### Test certificate 6012.01

check of the mould regarding the compliance of the tolerances according to the relevant standard

For further information please contact

Toni Technik Baustoffprüfsysteme GmbH  
Gustav-Meyer-Allee 25  
13355 Berlin  
Tel: +49 (0) 30/464039-21  
Fax: +49 (0) 30/464039-22  
Email: sales@tonitechnik.com  
www.tonitechnik.com

Technical Data				
Models	with holes	6012	6012.50	6021
	without holes	6012.40	6012.51	6021.10
Material		steel	stainless steel	steel
Weight	kg	10.1	10.1	10.1
Inner dimensions				
- length	mm	160.0 ± 0.5	160.0 ± 0.5	160.0 ± 0.4
- width	mm	40.0 ± 0.1	40.0 ± 0.1	40.0 ± 0.1
- height	mm	40.1 ± 0.1	40.1 ± 0.1	40.0 ± 0.1
Evenness of the bars	mm	0.02	0.02	0.02
Hardness of the bars	HV	≥ 200	≥ 200	≥ 200